

Harness the Power of Wind Farm Design

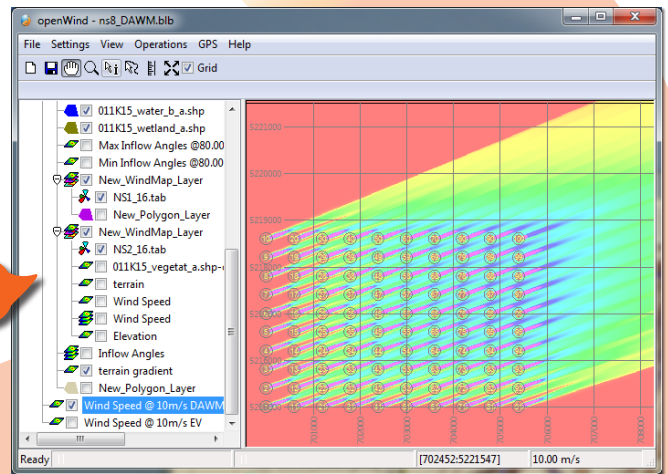
Built on the success of the community edition, **openWind® Enterprise** is a flexible yet robust wind farm design software application that extends far beyond energy capture.

Energy Capture and Beyond

openWind Enterprise combines the essential tools and capabilities community edition users have come to rely on with a number of advanced features that professional wind developers have been waiting for. Far beyond simple energy capture, with *openWind* Enterprise users can optimize for cost of energy, assess deep array impacts, define and analyze strategies for controlled shut-down of turbines, and manage uncertainty. **Exclusive features and capabilities include:**

- Optimization for Cost of Energy
- Authentication of Reports
- Deep Array Wake Models
- Siting and Optimization for Large Constrained Sites
- Uncertainty Module
- Directional Curtailment
- Inflow Angle Losses
- Shadow Flicker
- Gridded Turbine Layouts
- Grid Input Interface
- Scripting
- Crane Pad Checking

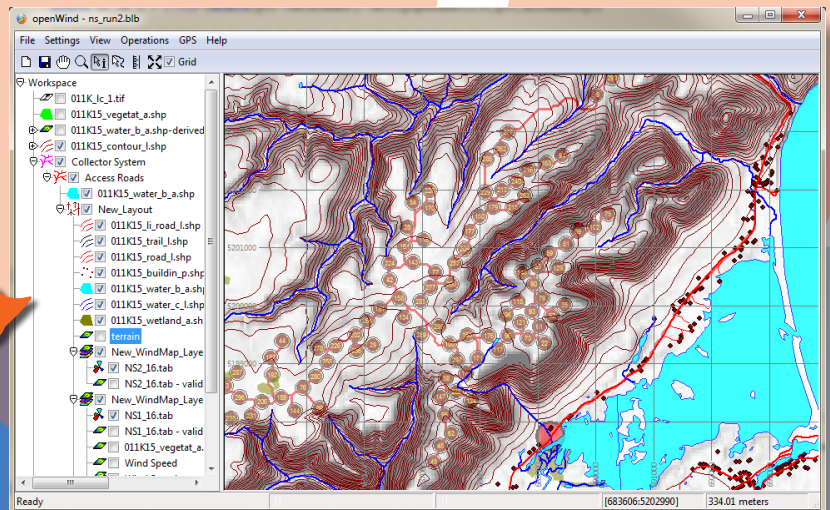
Assess Deep Array Impacts



Standard features and capabilities:

- Energy Capture
- Wake Models: Park, Modified Park, Eddy-Viscosity
- Layout Optimization
- ISO 9613 Noise Model
- Viewshed Analyses
- GIS Data Queries

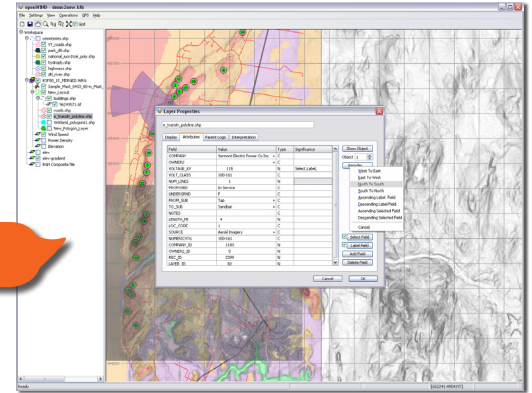
Optimize for Cost of Energy



Trust the Numbers

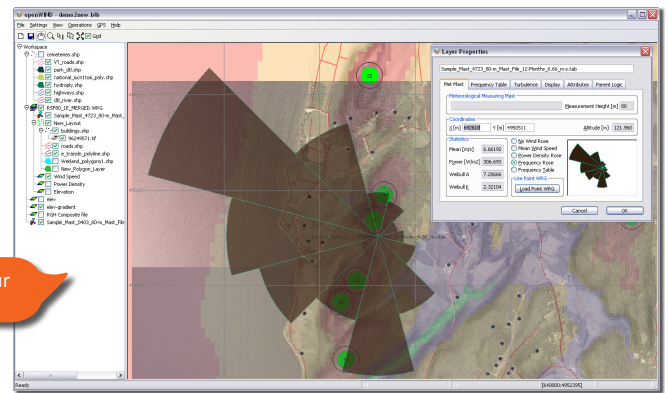
At AWS Truepower, we believe the best number is the most accurate one. With *openWind* Enterprise you can feel confident about your energy numbers, deep array losses, and the uncertainty associated with your projections. With the cost of energy optimizer you can examine a variety of build-out scenarios taking into consideration not only resource and energy potential, but the impact each turbine has on the bottom line.

Edit Layer Attributes



Work Smarter

openWind is a highly configurable toolbox for engineers and scientists. With its industry-leading geographical information systems (GIS) interface, it is exceptionally flexible, user-friendly and well-adapted to today's complex wind farm design challenges. The application is also fully compatible with other leading brands, enabling industry professionals and other interested parties to work efficiently and share information with ease.



Customize Your Display

Preserve Transparency

A unique feature of *openWind* is its transparency. Designed as an open-source platform, *openWind* is not a black box: its calculations can be observed and vetted independently, and users can add or modify capabilities as needed.

Ensure Integrity

Report authentication ensures the integrity of your reports for internal and external audiences.

The data you need to make it a reality.

To ensure high quality output you need high quality inputs. *windNavigator*[®], our web-based wind development and asset management application, offers a number of high-resolution data sets to support development. From thoroughly validated time series data for a single location, to project-specific wind resource grids and project design grids, *windNavigator* and *openWind* work together seamlessly so you can work smarter, not harder. Explore, design, and develop with AWS Truepower's exclusive tools. Visit: windnavigator.com today.

Looking for more support? AWS Truepower offers a full suite of consulting services including: site screening, conceptual project design, wind resource assessment campaign management and design, micro-siting and energy production reporting, to name a few. For operational projects, we provide performance assessment, due diligence and production forecasting. Whatever your business model might be, AWS Truepower can help you meet your goals.

